

PROFESSIONAL PEST MANAGEMENT



**PALATABLE  
& FAST**

Rapid action alphachloralose

**Gain time;  
Get results**

FOR LIFE UNINTERRUPTED™

 **Ridmus<sup>™</sup>Alpha**  
Rodenticide

syngenta.

# SUMMARY

- ▶ What is alpha-chlorolose
- ▶ How does it work and when to use
- ▶ Ridmus®Alpha – New from Syngenta
- ▶ Trials work
- ▶ User experience
- ▶ FAQs





# ALPHA-CHLORALOSE:

WHAT IS IT AND

HOW TO GET THE BEST FROM IT

# Alpha-chloralose: mode of action

Alpha-chloralose is an acute-acting active substance that has been developed at the optimum dose of 4%. It is modified glucose and not related to the widely used anticoagulants

Alpha-chloralose acts on the nervous system reducing brain activity, it slows the heart and also respiration as a fast-acting form of anaesthetic and lowers the body temperature

Hypothermia is a symptom with body temperature dropping by 20° Celsius

DROWSINESS

LOSS OF  
CONSCIOUSNESS

DEATH

|— 10 to 15 MINS —|

# Alpha-chloralose: mode of action

Dose is body weight dependent



25g lab mouse  
would normally  
need 0.3 to  
0.5 g of bait



Wild mice are  
frequently lighter  
and can succumb  
at a 0.2g dose  
i.e. - one feed

# Does it work like other rodenticides?

**Due to the rapid onset of drowsiness, once mice have eaten the bait they will become sedated and very often die whilst still in the bait box**

When this happens, dead mice can be recovered easily and won't die in inaccessible areas – reducing issues of creating unwanted odours

Risk assessments have considered mice dying outside of harbourages and the possibility of consumption by non-targets, but if this occurs no secondary poisoning has been identified





# RIDMUS®ALPHA

THE PRODUCT AND  
HOW TO USE IT



# Ridmus Alpha: the product

**Ridmus Alpha** is a ready to use, fast acting 'knock down' formulation of alphachloralose as the active ingredient (3.996% w/w).

For use against mice indoors (only).

Supplied in a 300mg tube to fit most standard application guns in use



- ▶ Ridmus Alpha is designed to gain fast control of mouse infestation. Once a satisfactory level of control has been achieved, switch to a more traditional AVK or non toxic monitoring method
- ▶ Ridmus Alpha should only be used as an option for a fast 'knock down' of infestation, not as a long term baiting solution
- ▶ This new formulation is so palatable that it does not need encapsulation
- ▶ Very quickly absorbed into the mouse's gut once taken
- ▶ Laboratory studies show it is so effective that normally a mouse needs less than half a gram for it to work



# Ridmus Alpha: how to use it (1/3)



Each tube comes with a nozzle – the nozzle also has a screw on cap to help reduce the risk of leakage. Any leaks or spillages must be cleared immediately in line with waste policies and local regulations



Cut the end of the tube and screw the nozzle onto the exposed thread. Dispose of the cut end in line with waste regulations



Once the nozzle is screwed in place, the end cap can be unscrewed for application of Ridmus Alpha. The end of the nozzle can be trimmed, but DO NOT trim back too far in case the cap thread is damaged



Place into the caulking gun and use as normal. After each application of Ridmus Alpha release pressure and replace the screw on cap, to minimise the risk of leaks and spills

In colder weather, the paste will become hard and therefore be more difficult to use – you may need to place somewhere warm prior to using.

Dispose of all waste carefully and in line with Policy and Regulations.



# Ridmus Alpha: how to use it (2/3)

- ▶ When using Ridmus Alpha, **remove any other bait type from the area**
- ▶ Place the Ridmus Alpha in boxes at approximately 1.5 - 2 metre intervals in the area being treated
- ▶ Once in place, it is suggested that a follow up visit is scheduled for 48 hours later – on this follow up visit you will be able to determine the amount of bait taken, allowing you to re-bait the boxes, adding or removing boxes as required for effective control
- ▶ Any deceased rodents must be collected and removed, and disposed of correctly
- ▶ As trained technicians it is up to you to use your skill and judgement to schedule further follow up visits – but please ensure you visit often enough to gain complete control of any infestation, and to not cause the customer any unnecessary distress that may occur by them finding high numbers of dead rodents – which is a possibility, given the effectiveness of Ridmus Alpha
- ▶ Control of an infestation this will be determined by a significant drop in bait take and infestation levels noted during your inspections. Any remaining Ridmus Alpha should be removed and replaced with an alternative method of monitoring or control

## Ridmus Alpha: how to use it (3/3)

- ▶ Always read the label
- ▶ Always wear protective gloves and coveralls PPE
- ▶ Product should only be used in approved bait boxes
- ▶ Use more bait points than usual (up to 3x) to encourage the mice to feed
- ▶ Product should be administered into the bait box - approximately 4 gm in each side of the bait box
- ▶ Any overspill should be clipped off on the inside of the bait box
- ▶ Release the pressure on the caulking gun after each application, to reduce the risk of waste or spillage



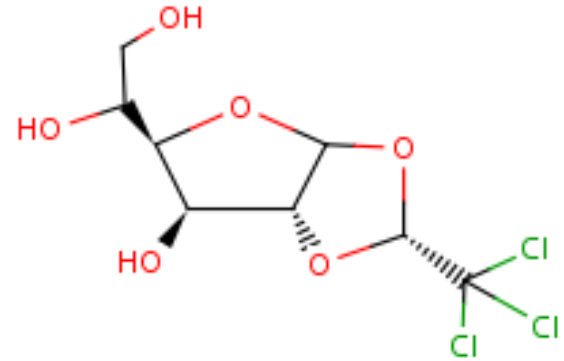
# Bait box inspection

Unlike other rodenticides, only the smallest amount of Ridmus Alpha may be required to give control of mice

A small scratch or single tooth mark on the Ridmus Alpha bait surface, from a mouse feeding, can be sufficient. Just 'sampling' the bait is very often enough

Compared to anti-coagulants, you will see less actual bait taken, but the product is very potent

During field trials corpses were found in boxes and just outside boxes, with these mortalities occurring with very little visual bait consumption

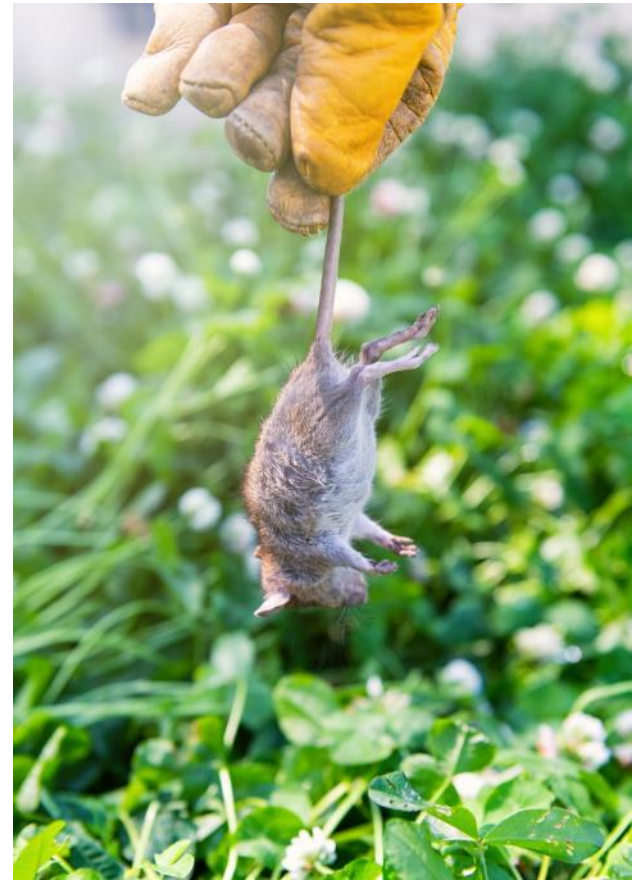


# Customer support

The action of Ridmus Alpha is very fast - as soon as mice start feeding

Be prepared to respond to customer's reactions where mice are to be found dead within hours

Customer responses with Ridmus Alpha has been highly positive for quick results to remove mice, whether there's one in a house or many infesting a business facility





# RIDMUS ALPHA

TRIALS AND USER TRIALS



# Trials

**Trials carried out in Ireland at various customer premises have assessed the performance in different environments and ambient temperatures.**

*“Ridmus Alpha was effective at quickly reducing the size of a very large mouse infestation, even in the presence of huge amounts of alternative food sources. It also reduced the infestation level immediately, and very quickly compared with anticoagulant preparations. This makes it particularly suitable for initial treatment of infestations.”*

PROJECT TEST TEAM IRELAND





# Efficacy in hot house conditions

Ridmus Alpha has proven to work effectively at temperatures above 15°C – when efficacy of other alpha-chloralose formulations have been questioned

Ridmus Alpha bait was placed in a boiler house, at temperatures between 25°C and 33°C

Initial non-tox trial bait consumption of 435g/day, reduced to 29.3g after Ridmus Alpha treatment – proving effectiveness in higher temperatures



*Catch from the boiler house  
after the 1<sup>st</sup> follow up*





# Q&A

# Will mice eat it?

## Ridmus Alpha is highly palatable.

Palatability is critical. Mice will typically feed randomly on 200 occasions, from 20-30 sites, per night

The formulation of Ridmus Alpha has been specifically developed to ensure enough is eaten by a mouse at a single feed

The combination of fats in the Ridmus Alpha formulation was shown to increase bait take four-fold



# Can I use it to control rats?

**No.**

Rats are not on the label and any control is not deemed effective enough to warrant use



# Is it temperature dependent?

Ridmus Alpha is an anesthetic, with such materials known to be more effective in the body at lower temperatures

Most mouse habitats are normally around 10°- 16°C which is the optimum temperature to achieve around 95% control

Activity is therefore best when mice feed in cool conditions... but high mortality rates have still been achieved at much higher temperatures



# Is there a secondary poisoning issue?

Alpha-chloralose has been extensively researched. New studies have shown it does not bio-accumulate in the body, and does not cause secondary poisoning in wildlife. It is not considered to be a PBT.

Whilst there are no cases on record of secondary poisoning having been proved to have occurred, uncontrolled exposure must always be avoided.



## Is there any resistance?

No cases of resistance to Ridmus Alpha have been found to date

Control has been reliable as long as the directions for use have been followed



# Should Ridmus Alpha be used with other actives?

Not at the same time. Ridmus Alpha is ideal as a treatment to control mice infestations quickly over a few days

Thereafter, if there is a re-infestation, a follow-up treatment, using other types of SGAR rodenticides, is recommended

There are very few non anti-coagulants in existence, so the opportunity to employ IPM techniques will protect the SGARS from over-use is important.





# Summary

- ▶ **Ridmus Alpha is an ideal product to achieve quick control of mouse populations**
- ▶ **It has no known resistance**
- ▶ **It has no secondary poisoning risks**
- ▶ **It is an acute poison that should only be presented in a locked tamper resistance bait station**
- ▶ **Care should be taken when presenting the bait to gain the most from it**
- ▶ **Do not use for prolonged spells – it is an initial knockdown product or for use in high resistance areas**
- ▶ **This new Ridmus Alpha formulation is a proven safe and effective additional tool, to use in IPM programmes with the anti-coagulant rodenticides available today**
- ▶ **It offers a radical improvement in the speed of service delivery and increased customer satisfaction, whenever a speedy mouse removal operation is required**



**THANK YOU!**